

## Corian Bases - White with Beveled Edges

Corian bases can be used under egg stands to give a sturdier base, especially when eggs become top heavy. Sizes shown are bottom measurements. Beveled corian is approximately 1/2" smaller across the top ( than size shown ). Corian bases can be spray painted to change color.



### Round 1/2" Thick

<u>Item</u>	<u>Size</u>	<u>Price</u>
714	2"	\$4.30
715	2 1/2"	\$5.15
716	2 3/4"	\$5.60
717	3"	\$6.05
718	3 1/2"	\$7.20
740	2 1/4"	\$4.75
744	4"	\$7.85

### Round 1/4" Thick

<u>Item</u>	<u>Size</u>	<u>Price</u>
720	1 1/2"	\$4.15
721	1 3/4"	\$4.25
719	2"	\$4.30
725	2 1/4"	\$4.75
726	2 1/2"	\$5.15
727	2 3/4"	\$5.60
736	3"	\$6.05

### Octagon 1/2" Thick

<u>Item</u>	<u>Size</u>	<u>Price</u>
710	2 1/4"	\$4.75
707	3"	\$6.05
709	3 3/4"	\$7.30
741	1 3/4"	\$3.25

### Octagon 1/4" Thick

<u>Item</u>	<u>Size</u>	<u>Price</u>
730	2"	\$4.30
731	2 1/2"	\$5.15
732	3"	\$6.05
742	2 3/4"	\$5.60
743	2 1/4"	\$4.35

### Oval 1/2" Thick

<u>Item</u>	<u>Size</u>	<u>Price</u>
734	3 1/2" x 2 1/2"	\$10.20

### Oval 1/4" Thick

<u>Item</u>	<u>Size</u>	<u>Price</u>
728	2 3/4" x 3 1/4"	\$8.80
729	3" x 2 1/4"	\$9.20
739	2 1/2" x 1 1/4"	\$7.45

### Oblong (octagon) 1/2" Thick

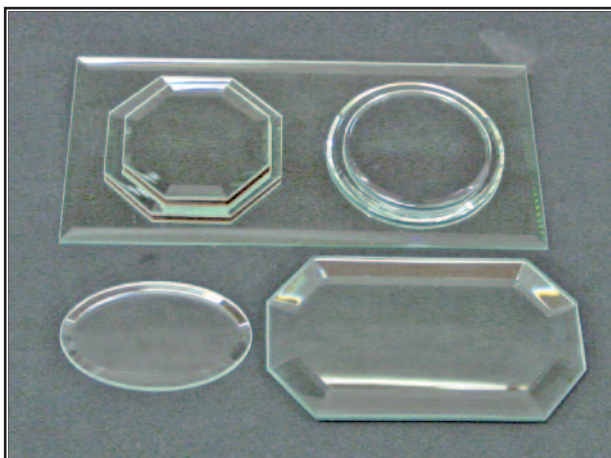
<u>Item</u>	<u>Size</u>	<u>Price</u>
712	3 1/2" x 2 1/2"	\$5.00
708	4 1/4" x 3"	\$7.40

### Square 1/2" Thick

<u>Item</u>	<u>Size</u>	<u>Price</u>
735	3 1/4" (Fits Stand 6010)	\$5.20

### Rectangle 1/2" Thick (not pictured)

<u>Item</u>	<u>Size</u>	<u>Price</u>
746	8" x 3 3/4"	\$9.00



**Beveled Mirrors**

- 772 \$4.75 8" x 4" Rectangle
- 771 \$5.75 4 3/4" x 3" Octagon
- 770 \$5.25 5" Oval
- 769 \$2.75 3" Round
- 768 \$2.40 3" Octagon
- 767 \$2.40 2 1/2" Round
- 766 \$2.25 2 1/2" Octagon
- 765 \$3.90 3" Oval



**738 \$15.70**

Pre-lit resin Base  
Requires 1 - "9" Volt battery.  
Base can be painted to change color.



**"Anniversary Moments"**

Using base ST16  
shown at right.



**ST16 \$37.50**

Double-tier corian base  
Includes: 2 corian pieces, 3 gold plated  
rods & revolving mechanism.  
Requires 1 "AA" battery.  
Assembly required.



**ST6 \$8.95**

Base holds battery packs.  
Base can be painted.



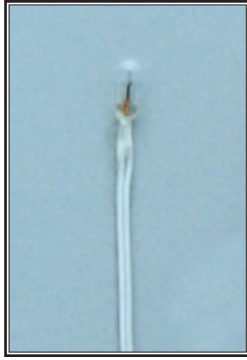
**ST12 \$9.35**

Holds rotating mechanism  
ST13 or ST15- shown on page 28.

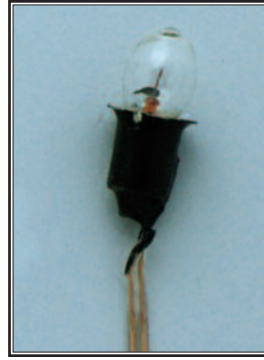
Electrical



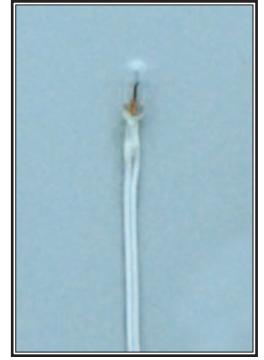
**W-1 \$1.75**  
1.5 Volt bulb



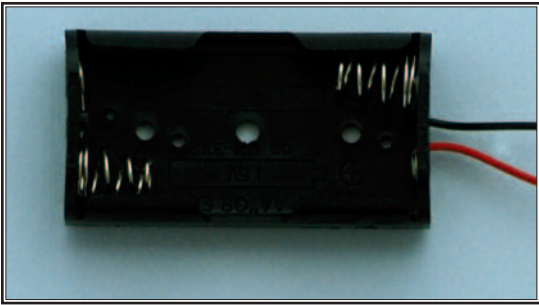
**W-2 \$1.95**  
3 Volt bulb



**W-3 \$2.50**  
3 Volt super-bright bulb



**W-4 \$1.80**  
9 Volt bulb



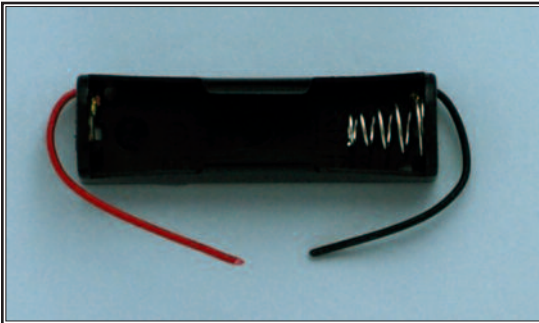
**W-8 \$1.55**  
2 "AA" Battery Pack  
Use with W-2 or W-3  
Shown above.



**W-5 \$3.15**  
Toggle Switch



**W-6 \$1.25**  
1 ft. Shrink Tube

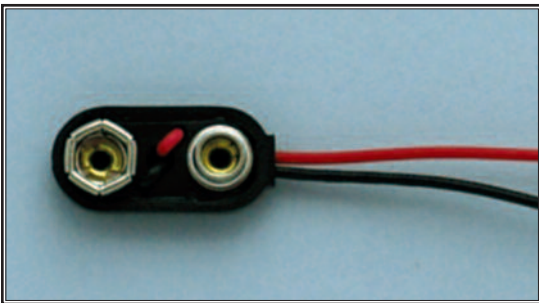


**W-7 \$1.50**  
1 "AA" Battery Pack  
Use with W-1 Shown above.

**Complete Light Setup \$6.95**  
Includes - Light Bulb, Battery Pack, Toggle Switch, & Shrink Tube.

**Please specify Item Number from choices below:**

W-13A 1.5 Volt  
W-13B 3 Volt  
W-13C 3 Volt Super-bright  
W-13D 9 Volt



**W-9 \$1.25**  
"9 Volt" Battery Pack  
Use with W-4 Shown above.



**W-11 \$2.50 Strobe**  
**W-12 \$2.50 Solid light**  
Twist to turn on.



**W-10**  
**DISCONTINUED**  
Sub W10-R found on  
New Items Page

Multi-color Light Bases



**LB4 \$20.00**

1 3/4" H x 3 1/4" W

Cycles 4 Different colors, No movement.

Requires 4 "AA" batteries.

Power supply available for \$8.00.



**"Arctic Kingdom"**

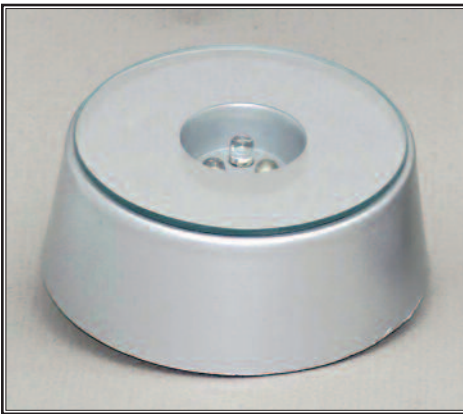


**LB3 \$42.00**

2 1/2" H x 4" W

Rotates and cycles alternating colors.

Black, comes with power cord or requires "AA" batteries.

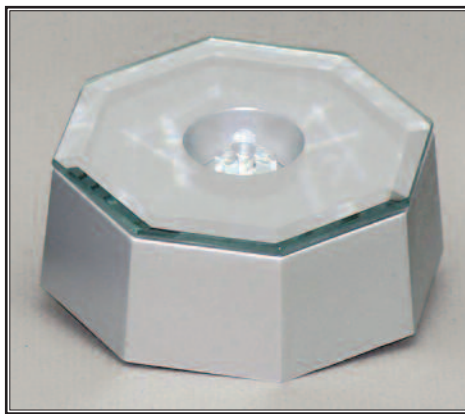


**LB8 \$8.00**

1 1/4" H x 2 1/2" W

Silver only (3 AAA batteries)

White Light only-No alternating colors.

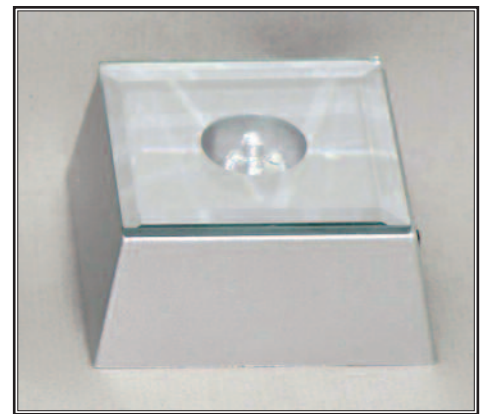


**LB6 \$8.00**

1 1/4" H x 2 3/4" W

Silver only (3 AAA batteries)

Cycles alternating colors.



**LB5 \$8.00**

1 1/4" H x 2 1/4" W

Silver only (3 AAA batteries)

Cycles alternating colors.



**LB1 Silver  
DISCONTINUED  
LB 2 Black  
DISCONTINUED**



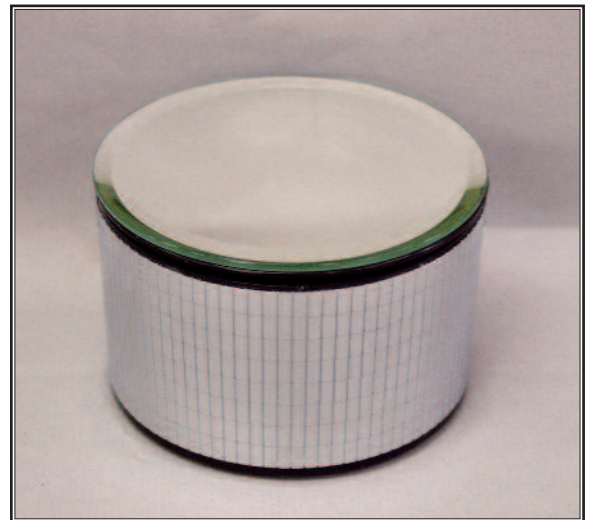
**ST13 DISCONTINUED  
ST15 \$10.00 Black**

1 1/2" H x 3" W Rotating  
When taken apart - mechanism will fit in ST12.  
Shown on page 26. Requires 1 "AAA" Battery.

Mirror Turntables

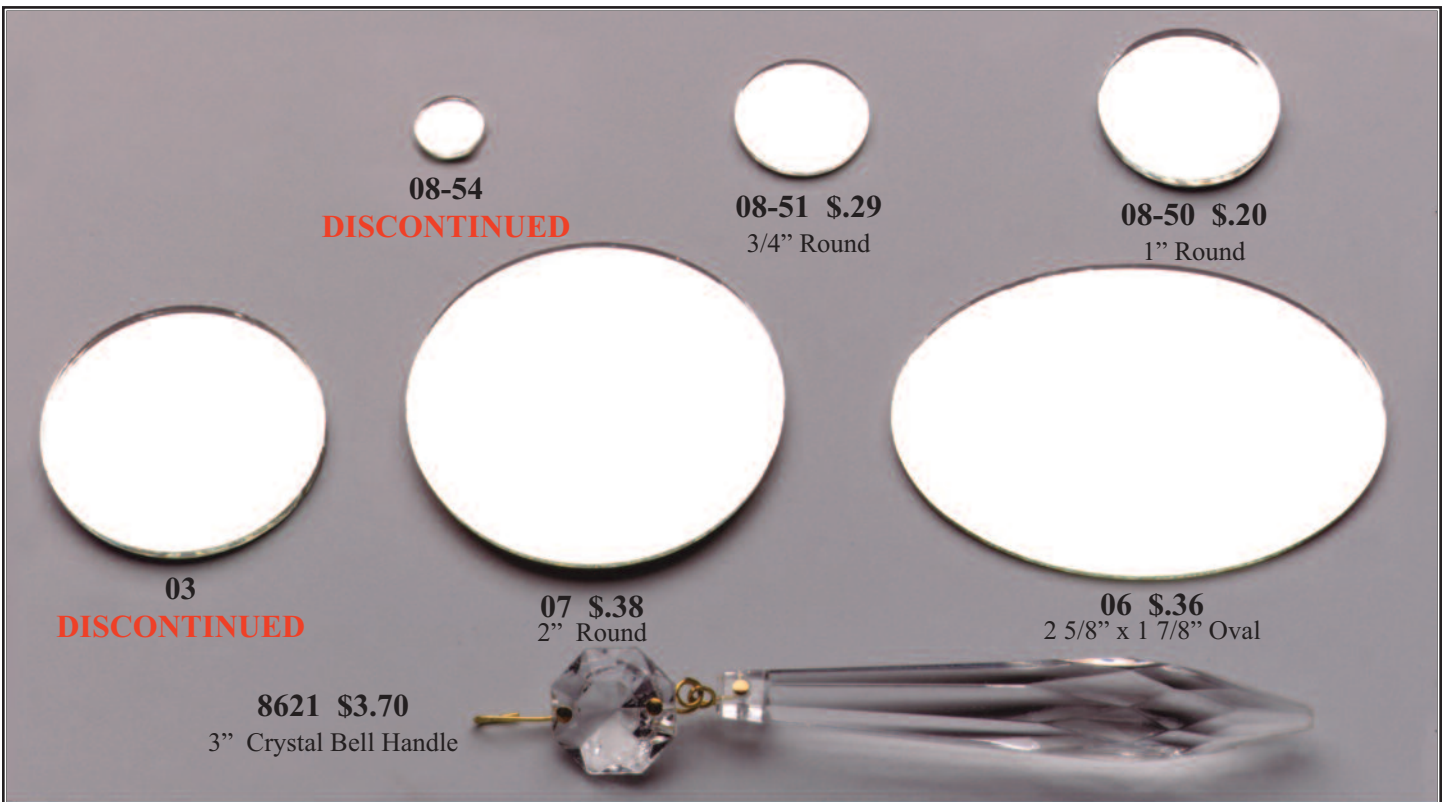


**LB9 \$35.00**  
 7" W x 2 1/4" H  
 Revolving mirrored turntable.  
 Requires 1 "D" battery.



**LB10 \$20.00**  
 2 1/4" H x 3 1/2" W  
 Revolving mirrored turntable.  
 Requires 1 "AA" battery.

Mirrors



**08-54**  
**DISCONTINUED**

**08-51 \$0.29**  
 3/4" Round

**08-50 \$0.20**  
 1" Round

**03**  
**DISCONTINUED**

**07 \$0.38**  
 2" Round

**06 \$0.36**  
 2 5/8" x 1 7/8" Oval

**8621 \$3.70**  
 3" Crystal Bell Handle

Ceramic Teapot Handles & Spouts & Swan Necks



“Time for Tea”



**TP-1 \$5.00**  
Duck  
Handle & Spout

**TP-1A \$3.00**  
Handle Only



**TP-2 \$6.00**  
Goose  
Handle & Spout

**TP-2A \$3.50**  
Handle Only



**M513 \$6.50**  
Swan Neck for Goose



**M514 \$7.50**  
Swan Neck for Rhea



**TP-3 \$7.50**  
Rhea  
Handle & Spout



**TP-4 \$7.00**  
Ostrich  
Handle & Spout  
(Not Shown)

**M512 \$6.00**  
Swan neck for Duck  
(Not shown)