

**Build your own Stand**



•\*7057 \$2.85  
Inverted Dap



Item 814 - this page  
Item 9182 - page 44  
Item 5001 - page 52  
Item 9129 - page 33



\*9397 \$3.60



•8016 \$3.10  
Inverted Dap



9272 \$2.40



•814 \$3.40



•815 \$3.95



•851  
**DISCONTINUED**



•9173  
**DISCONTINUED**



•9527  
**DISCONTINUED**



•9013  
**DISCONTINUED**

Build your own Finial



9331 \$1.90



9332 \$1.55



\*9220 \$.65

Make a Stand with 9331, 1050 or 1051 Rondell and 9331 or 9332

Finial 1

Finial 2



9102-R  
9535  
5500 Cab  
Corsage Pin

9550  
9586  
5002 Cab  
8131  
Corsage Pin



8090-L \$1.95



8090-S \$1.35  
8090-SSV \$1.35



9544 \$1.30



5146 \$1.95  
5146SV \$1.95



\*9347 \$1.15



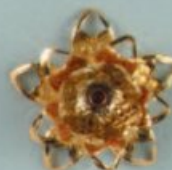
\*9425  
**DISCONTINUED**  
SUB 9221



\*9535 \$2.60  
\*9535SV \$2.60



9446 \$2.25  
9446SV \$2.25



9349 \$4.00



9350 \$4.95



\*9224 \$3.45



\*9223 \$1.65



\*9222 \$1.25



\*9221 \$.85  
\*9221SV \$.85

Use 9220, a Jewel Bead and a Pin to Make a Top

These Pieces Can Be Bent to Make an Egg Stand

Plated Filigree



9079 \$.95



9541 \$.95

Use with 14 x 10  
Cameo



9478

**DISCONTINUED**



\*9480 \$2.10

Use These with 18 x 13 Cameo



9513 \$3.45

Use with 30 x 22  
Cameo



9533 \$1.16

Use with 14 x 10  
Cameo



\*751-I \$3.10



\*723 \$3.70

812-S-SV \$1.65



9082 \$1.45



812-S \$1.65



812-M \$1.90



812-L \$2.00



\*9456 \$2.70



\*9457 \$3.40



\*9550 \$2.50



\*9548 \$2.75



9467 \$3.25



\*9519 \$1.95



\*9465 \$1.85



\*9466 \$3.25

9465SV \$1.85

Plated Filigree



**\*\*9014-S**  
\$.70



**\*\*9014-M**  
\$.75



**\*\*9014-L**  
**\*\*9014-L SV**  
\$.80



**\*\*752** \$1.25  
**\*\*752SV** \$1.25



**\*\*9114** \$1.55  
**\*\*9114SV** \$1.55



**\*\*9542**  
\$1.65



**630-S** \$.35



**631** \$.45



**632** \$.65



**\*\*630-M** \$.74  
**\*\*630-MSV** \$.74



**\*\*630-L** \$1.05



**9281** \$1.35



**\*\*9130** \$2.20



**\*\*9129** \$2.00



**\*\*9441** \$1.65



**9102** \$1.45  
**9102SV** \$1.45



**9134** \$2.65  
1/4" Dap



**7038** \$3.85  
1/2" Dap



**722** \$3.90



**\*\*9547** \$3.25



**763** \$2.60



**\*9340** \$2.15

Plated Filigree

 57 \$ .38 57SV \$ .38 Up-Eye	 55 \$ .42 Up-Eye	 78-S \$ .56 78-SSV \$ .56 Up-Eye	 78-M \$ .58 78-MSV \$ .58 Up-Eye	 78-L \$ .60 78-LSV \$ .60 Up-Eye	 9268 \$ .36 Screw Eye Use to Hang Dangles, etc.	
Use for Hanging Eggs, and Attaching Tassels, Dangles and Pendants						
 9473 \$ .41 Bead Caps with Hole	 9474 \$ .41	 74 \$ .60 74SV \$ .60 Pendant Holder	 68 \$ .72 Pendant Holder	 *72 \$ .53 Pendant Holder	 4165 \$ .46 Pendant Holder	
 37AX \$ 1.22	 9380 \$ 1.37 Eye on Top for Hanging	 039 \$ .30 039SV \$ .30 Jump Ring	 038 \$ .11 Jump Ring	 032 \$ .08 032SV \$ .08 Jump Ring	 9364 \$ .07 Eyelets	 9365 \$ .07 Eyelets
 029HP \$ .25 029 HP-SV \$ .25 3" Head Pin			 029EP \$ .25 029EP-SV \$ .25 3" Eye Pin			
 9061 \$ 1.50 Music Box Legs	 S-81 \$ 1.35 Music Box Leg	 9270 <b>DISCONTINUED</b>				
 9184 <b>DISCONTINUED</b>	 9169 <b>DISCONTINUED</b>	 9227 <b>DISCONTINUED</b>	 9226 <b>DISCONTINUED</b>			

Gold Plated Filigree



\*9410 \$1.25



\*2135  
**DISCONTINUED**



\*1558 \$1.05



\*8062 \$1.40



\*9336 \$2.95



\*9076 \$2.50



\*827 \$3.40



\*9067 \$1.65



\*9346 \$3.95



\*9156 \$3.80



\*1708 \$2.25



\*9185  
**DISCONTINUED**

Plated Filigree



9539 \$.64      \*8065 \$.75      \*9408 \$.95      \*8082-S \$1.25      \*8082-L \$1.95



\*9255 \$.75      \*9254 \$1.00      \*9034 \$1.25



\*9003 \$.43      \*9002 \$.63



\*9534 \$.79      \*9132 \$1.20



\*9414 \$1.75



\*9418 \$1.95

Create your own Trees



<p><b>Supply list</b>                  1 Finding # 8157                  1 Finding # 9182                  1 Finding # 9457</p>	<p>Decorate tree with assorted 12ss flat-backs, chain crystal or 1087.</p>
---	--



\*8157 \$9.75

Bend to Form a Stand or Add to a Stand for a New Effect

Plated Filigree



9278 \$.30



9279 \$.30



\*9357 \$.75



\*9358 \$.75



\*9162 \$.85



\*9163 \$.85



9310 \$1.28



9311 \$1.28



\*9390  
DISC



\*9442  
DISC



\*9515 \$1.10



\*9516 \$1.10



\*9165 \$.80



\*9161 \$.80



\*9312 \$1.04



\*9313 \$1.04



\*9158 \$.80



\*9159 \$.80



\*9066-L \$1.30



\*9066-R \$1.30



\*9154 \$.86



\*9155 \$.86



\*757 \$1.35



\*9461 \$2.25



\*9078 \$2.75



\*9077 \$2.75



Gold Plated Filigree



9234 \$.67



\*9309 \$1.10



9100 \$1.20



\*9521 \$1.79



\*9509 \$1.25



\*9098 \$2.00



\*9087 \$.95



9125 \$1.15



\*9296 \$1.95



\*9546 \$2.15



\*9404-R \$1.75



\*9490 \$1.50



\*9503 \$2.60



\*756 \$2.75



\*9501  
DISC



\*9511 \$1.45



9294 \$1.05



9280 \$.96



\*9295 \$1.95

Plated Filigree

 <b>140 DISC</b>	 5021 \$.72	 <b>5022 DISC</b>	 5023 \$.66	 5020 \$.70	 702 \$.80
Hinges					
 87 \$.70	 <b>88 DISC</b>	 252 \$.85	 5024 \$.90		
 <b>028HP \$.08</b> 5/8" Head Pin	 9206 \$3.50	 9205 \$3.50	 9148 <b>DISCONTINUED</b>		
Latches					
 9401 \$.45	 9399 \$.70	 *9324 \$.63	 9459 \$.85	 *9529 \$.83	 <b>9530 DISC</b>
<b>9401SV \$.45</b>	Hinge Covers				
 *8061-L \$2.05	 *8061-S \$1.15	 *9413 \$1.23	 *9406 \$1.05	 *9450-R \$.90	 *8061-SSV \$1.15
 9540 \$.35	 9472 \$.55	 9400 \$.60	 *9447 \$.53	 *9464 \$.64	 *9463 <b>DISC</b>
 9443 \$.60	 9389 \$.55	 *9452 \$.70	 9484 \$1.02	 *9084 \$.87	

Plated Filigree



9101-L  
DISC



9101-S \$2.25



9231 \$1.43



8136-L \$2.85



8136-S \$2.45



483 \$1.27



9233 \$.54



9239 \$.67



9240 \$.57



2161-L \$.54



2161-M \$.52



2161-S \$.50



2078-L \$.54



2071 \$.34



2074 \$.32



2078-S \$.28



2080 \$.35



9430 \$.49



9282 \$1.02



9470 \$.65



9469 \$.85



\*9532 \$1.24

For Door Pulls and Dangles  
(Use with Screw Eye, or Up-Eye and Jump Ring)



9528 \$1.71



9433 \$1.15



9288 \$1.25



NT-11-R \$1.25



NT-6 DISC  
NT-6SV DISC



NT-5 DISC  
SUB NT-6



489 \$.75



9287 \$1.20

Plated Filigree

					
9235 \$.59	9435 \$.76	9256 \$.68	9248 \$.69	9409 \$.79	
					
*3691-R \$1.55	*9171-R \$1.35	*9172 \$.77 *9172SV \$.77	9392 \$.82	9429 \$.94	
					
9166 \$.73	9426 \$.99	*9149 \$.95 *9149SV \$.95	9412 \$1.42		
					
9455 \$.57	9259 \$.80	9258 \$.95 9258SV \$.95	9479 \$1.19	9439 \$.77	53 \$.85 53SV \$.85
					
9506 \$.83	9507 \$.83	9537 \$.74	9538 \$.74		
					
9246 \$.25	9432 \$.46	*3156 \$.54	R-96 \$.25	9381 \$.39	*R-90 \$.69

Plated Filigree



9592 \$2.95



9591 \$1.25



\*9596 \$2.70



9593 \$2.25



\*9590 \$1.67



\*9595 \$2.30



9651 \$.80



\*9597 \$1.75



\*9588 \$1.50



\*9585 \$2.37



\*9645 \$2.30



1065  
DISC



1087 \$2.75  
Crystal Only



1062 \$1.90  
1062SV \$1.90  
Crystal Only



9656 \$3.50



9657 \$3.75



3600 \$1.25  
Crown



M418 \$9.75

Plated Filigree

						
040 \$.20			9574 <b>DISC</b>	9573 \$.99	9578 \$.39	9577 \$.70
040SV \$.20	9576 \$.67	9575 \$.72				
						
9583 \$1.70	9589 \$.80	9579 <b>DISC</b>	9653 \$.34	9652 \$.82	893 \$.75	971M \$.92
				9652SV \$.82	893SV \$.75	
						
*9582 \$1.05	*9581 \$.85	*9644 \$.90	*9580 \$.75	9598 \$1.89		
						
9641 \$1.59	*9648 \$.83	9646 \$.80	9647 \$.80	*9649 \$.95		
		9646SV \$.80	9647SV \$.80			
						
*9640 \$.85	9655 \$.60	*9599 <b>DISC</b>	9643 \$.65	9642 \$1.47		
						
*9650 \$2.75	9584 \$2.75	9586 \$2.50	9594 \$1.95			
			9594SV \$1.95			
			Great Quail Egg Stand			

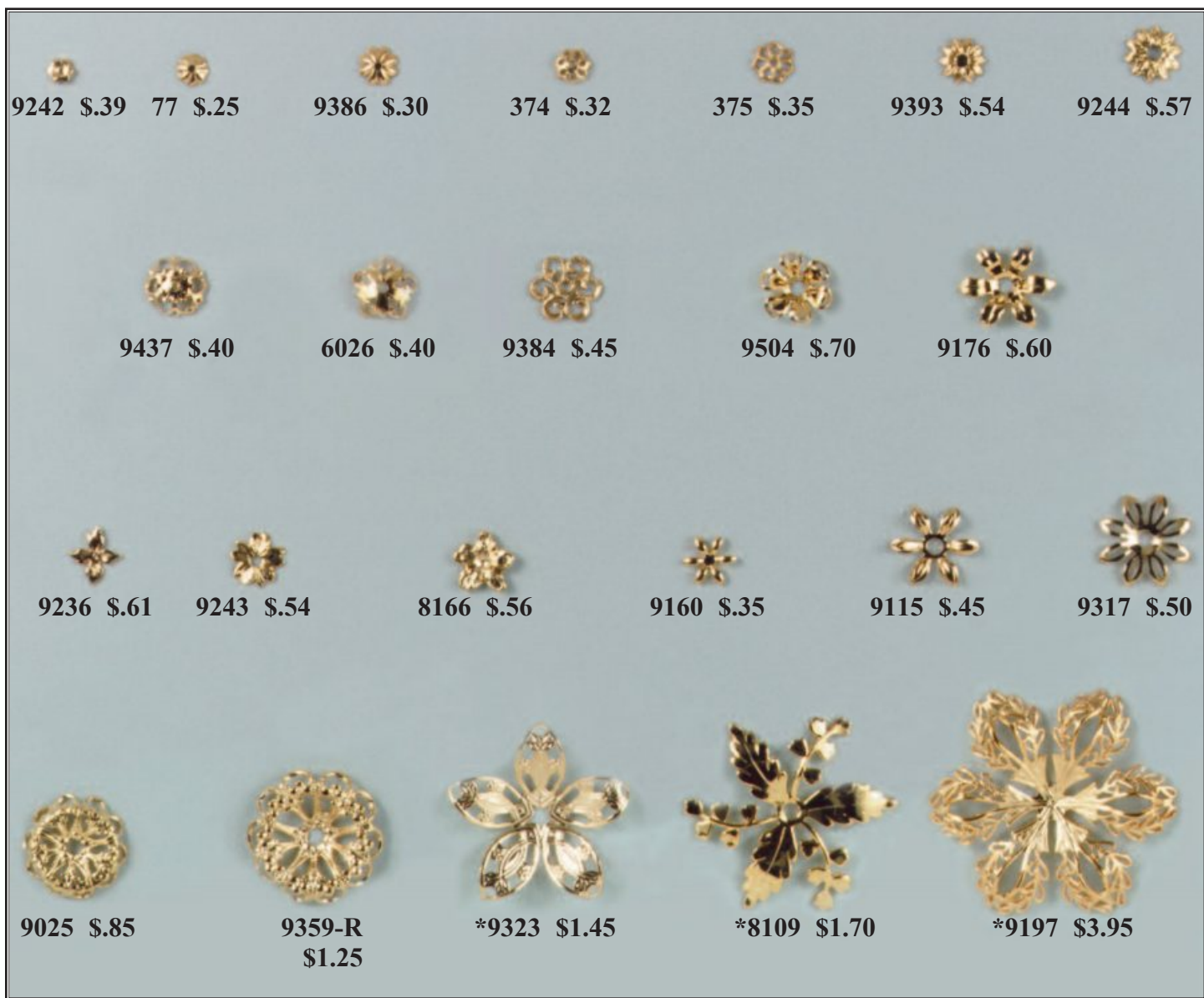
\*Bendable

Plated Filigree

					
•9305 \$.20					
9305SV \$.20	•9306 \$.33	•9307 \$.44	9191 \$.78	•8131 \$.89	•9545 \$1.43
					
5906 \$1.20	5905 \$1.10	9190 \$1.10	9302 \$1.00	9041 \$2.20	
					
633 \$.74	9335 \$.74	9303 \$.94 9303SV \$.94	9181 \$1.05	9182 \$1.25	
					
9371 DISC	9320 \$1.30	8144 \$1.54	8142 \$2.00		
					
9558 \$1.10	9568 \$.24 4mm bead	9560 \$1.12	9559 DISC	9562 DISCONTINUED	
					
*9554 \$1.50	3601-R \$3.25	*9555 \$1.60			

Insert a Bead in These for Finials

Plated Items



**Dog M**  
451 \$7.95  
Quail Size



**Elephant**  
**DISCONTINUED**



**Elephant**  
M448 \$7.95  
Button Quail Size



**Pig M515**  
**DISCONTINUED**

\*Bendable